

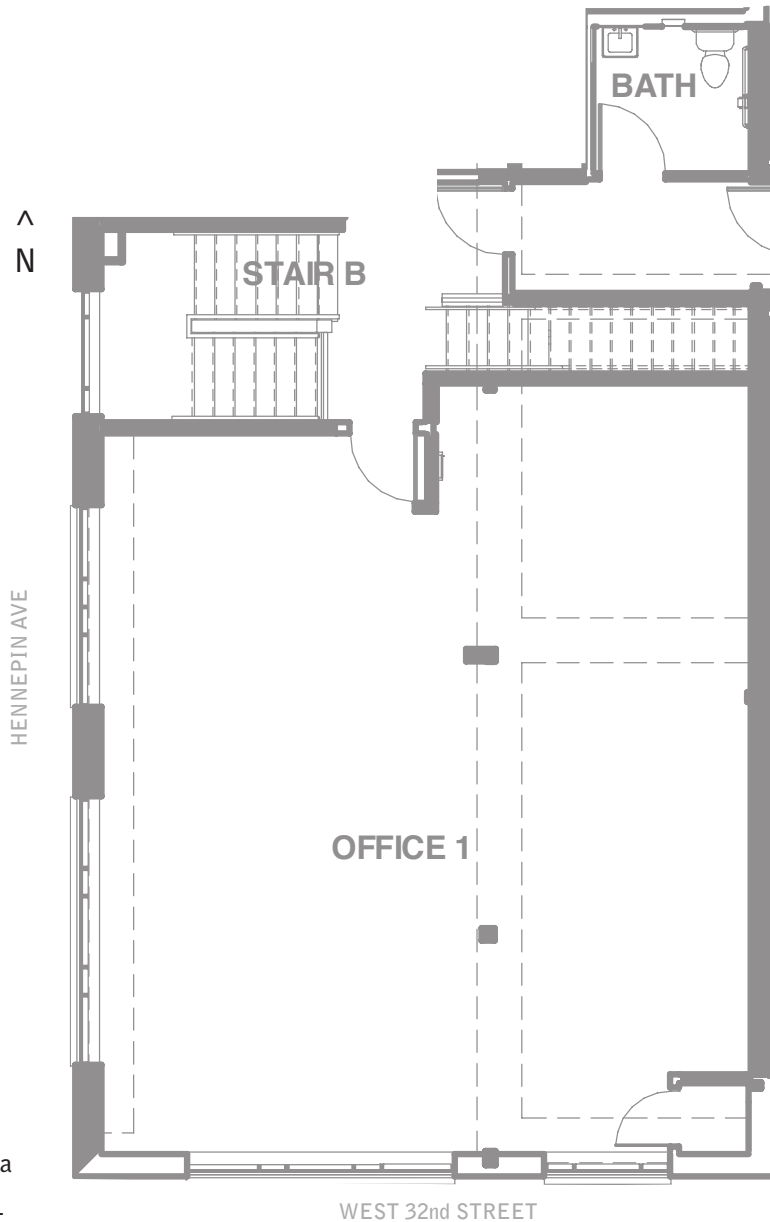


# COMMERCIAL OFFICE SPACE

**Office 1**  
Approx 966 sqft



SECOND FLOOR



- Move in ready with basic finished interiors
- Bathroom shared between Office 1 and Office 2
- Large walk up entry
- On-street parking

## LOCATION

- On bus line
- Two blocks from Lake Street and Calhoun Square

## 1 Mile Radius Statistics

Population: 25,411

Avg Household Income: \$55,529

Auto Traffic Counts:

32nd and Hennepin intersection - 6,800 vehicles per day

Contact Tony Kriha  
ph: 612.986.2511  
tony@landergroup.com

ZE0  
3145 Hennepin Ave  
Minneapolis, MN 55408  
612-361-9881  
zeo-uptown.com

FLOOR PLANS ARE NOT TO SCALE. DESIGN AND DEVELOPMENT BY LANDER GROUP. WE RESERVE THE RIGHT TO ADJUST FEATURES, PRICING, AND AVAILABILITY AT ANY TIME.



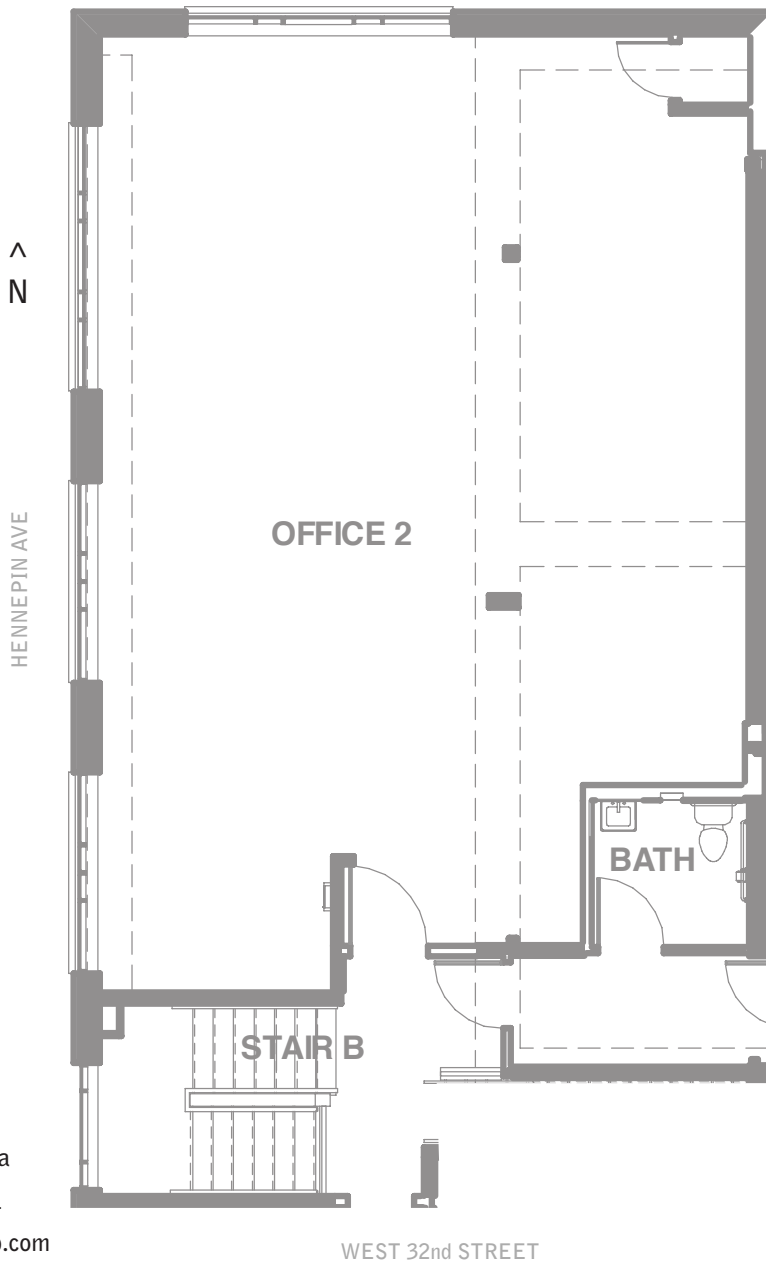


# COMMERCIAL OFFICE SPACE

Office 2  
Approx 1281 sqft



SECOND FLOOR



- Move in ready with basic finished interiors
- Bathroom shared between Office 1 and Office 2
- Large walk up entry
- On-street parking

## LOCATION

- On bus line
- Two blocks from Lake Street and Calhoun Square

## 1 Mile Radius Statistics

Population: 25,411  
Avg Household Income: \$55,529  
Auto Traffic Counts:  
32nd and Hennepin intersection - 6,800 vehicles per day

Contact Tony Kriha  
ph: 612.986.2511  
tony@landergroup.com

ZE0  
3145 Hennepin Ave  
Minneapolis, MN 55408  
612-361-9881  
zeo-uptown.com

FLOOR PLANS ARE NOT TO SCALE. DESIGN AND DEVELOPMENT BY LANDER GROUP. WE RESERVE THE RIGHT TO ADJUST FEATURES, PRICING, AND AVAILABILITY AT ANY TIME.





## COMMERCIAL OFFICE SPACE

## EXTERIOR



Contact Tony Kriha  
ph: 612.986.2511  
tony@landergroup.com

ZE0  
3145 Hennepin Ave  
Minneapolis, MN 55408  
612-361-9881  
zeo-uptown.com

FLOOR PLANS ARE NOT TO SCALE. DESIGN AND DEVELOPMENT BY LANDER GROUP. WE RESERVE THE RIGHT TO ADJUST FEATURES, PRICING, AND AVAILABILITY AT ANY TIME.





## COMMERCIAL OFFICE SPACE

## INTERIOR



Contact Tony Kriha  
ph: 612.986.2511  
tony@landergroup.com

ZE0  
3145 Hennepin Ave  
Minneapolis, MN 55408  
612-361-9881  
zeo-uptown.com

FLOOR PLANS ARE NOT TO SCALE. DESIGN AND DEVELOPMENT BY LANDER GROUP. WE RESERVE THE RIGHT TO ADJUST FEATURES, PRICING, AND AVAILABILITY AT ANY TIME.

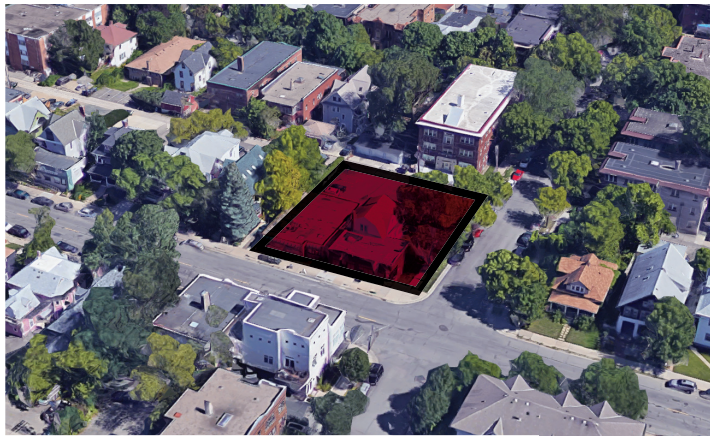






## COMMERCIAL OFFICE SPACE

## LOCATION



Perched on a Hennepin Avenue corner, Zeo adds new possibilities to an already vibrant Uptown life.

Retail, restaurant, and professional services can draw traffic from both the surrounding blocks, and the rental homes also part of the building.



Contact Tony Kriha  
ph: 612.986.2511  
tony@landergroup.com

ZE0  
3145 Hennepin Ave  
Minneapolis, MN 55408  
612-361-9881  
zeo-uptown.com

FLOOR PLANS ARE NOT TO SCALE. DESIGN AND DEVELOPMENT BY LANDER GROUP. WE RESERVE THE RIGHT TO ADJUST FEATURES, PRICING, AND AVAILABILITY AT ANY TIME.

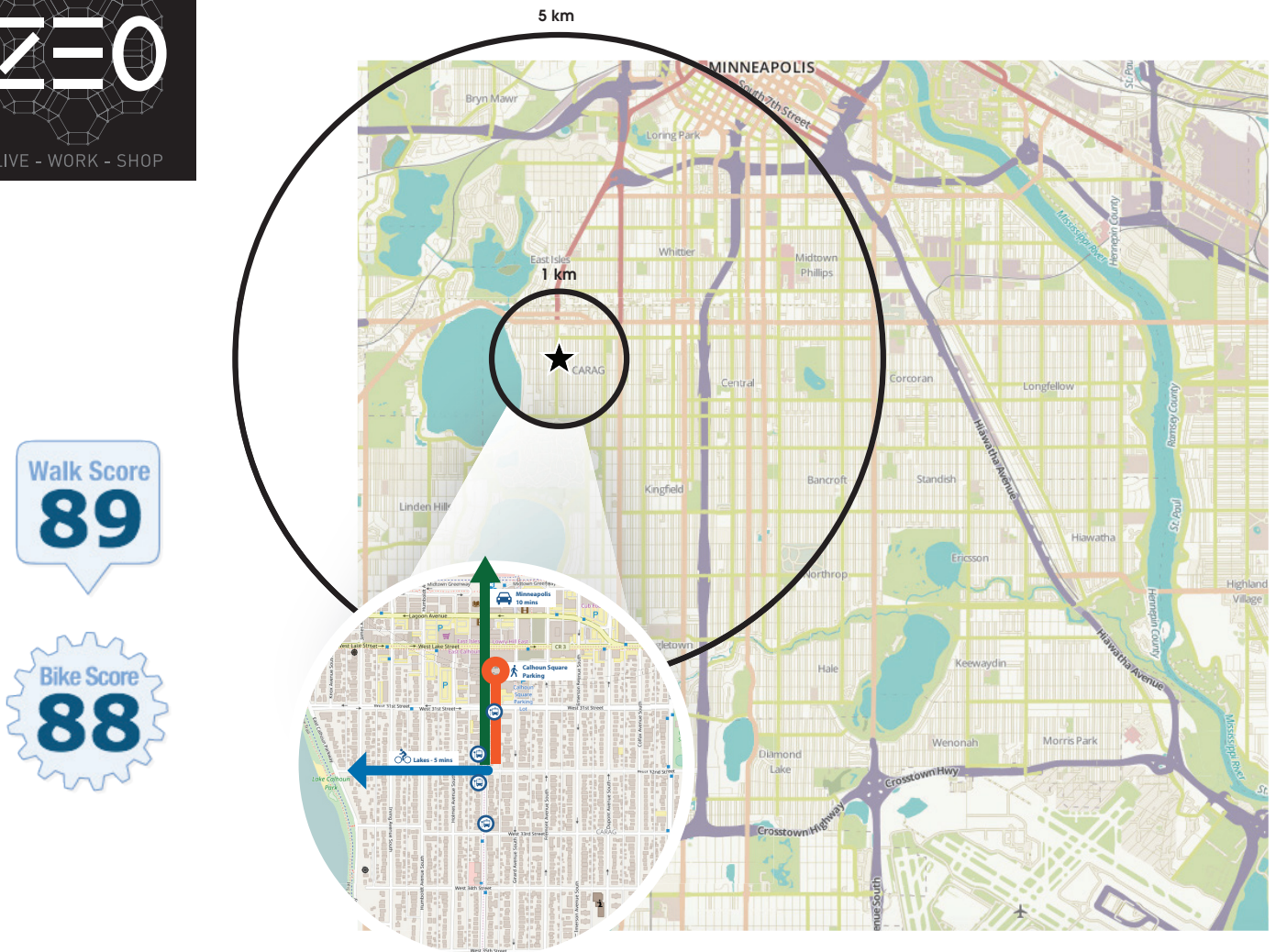






## COMMERCIAL OFFICE SPACE

## NEIGHBORHOOD



Walk Score  
**89**

Bike Score  
**88**

Zeo is at the epicenter of the Minneapolis Lakes area - known for vibrant retail and recreation options supporting all ages and lifestyles.

### NEARBY (1/2 mile)

Black Walnut Bakery  
Dunn Bros Coffee  
Chino Latino  
Lunds & Byerlys Uptown  
Minneapolis  
Amazing Thailand  
Bryant-Lake Bowl &  
Theater  
Famous Dave's Bar-B-Que  
Stella's Fish Café  
Pizza Lucé  
The Lyndale Tap House  
Barbette  
Muddy Waters  
Roat Osha  
The Pourhouse Uptown  
Dunn Brothers Coffee  
Kinndo Restaurant  
Moto-iKiku Bistro  
Uptown Tavern & Rooftop  
Sushi Tango

Williams Uptown Pub  
Fuji Ya  
It's Greek To Me  
Morrissey's Irish Pub  
Libertine  
Lake & Irving Restaurant  
Amore Uptown  
Wedge Community Co-Op  
Kowalski's Market  
Oak Grove Grocery  
Lunds & Byerlys Uptown  
Minneapolis  
Bills Imported Foods  
Cub Foods Uptown  
SAM'S MARKET  
Kyle's Market  
LA Fitness  
CorePower Yoga  
YWCA Minneapolis  
Uptown  
Snap Fitness  
Six Degrees Uptown

Minneapolis Yoga  
Jennifer Colletti Yoga  
Surya Ayurveda Awaken  
Pilates Studio  
BodyWisdom Yoga  
CycleBar Uptown MPLS  
SATTVA  
IM=X Pilates & Fitness  
Open Minds Fusion Studio  
Heart Yoga  
Jenn Weldon Pilates  
Moving Beyond  
Studio For Hire  
Wing Chun MSP  
Anytime Fitness  
Ragstock  
Urban Outfitters  
Venus Unveiled  
Knights Clothiers  
Fashion Accessories  
Columbia Sportswear  
June

Timberland  
Familia Skateshop  
The North Face  
Top Shelf  
My Sisters' Closet  
Corner Store Vintage  
Covered Uptown  
Tibet Store  
Sharp360 Menswear  
Nespresso Boutique  
H&M  
Running Room  
Fjällräven Uptown  
Magers & Quinn  
Target Uptown  
Welcome Home Futon  
Virtual Office Furniture  
Pharmacie  
and more . . .

Contact Tony Kriha  
ph: 612.986.2511  
tony@landergroup.com

ZE0  
3145 Hennepin Ave  
Minneapolis, MN 55408  
612-361-9881  
zeo-uptown.com



## COMMERCIAL OFFICE SPACE

## TENANTS

### In Good Company

Whether you are in the service, retail, or professional industry, the Lander Group team has an excellent record in partnering with business owners to create the best environment for success. We think beyond the walls and design neighborhoods which generate the energy that fuels commerce. The Lander Group is proud to partner with local businesses such as:



... and many more.

Contact Tony Kriha  
ph: 612.986.2511  
tony@landergroup.com

ZE0  
3145 Hennepin Ave  
Minneapolis, MN 55408  
612-361-9881  
zeo-uptown.com